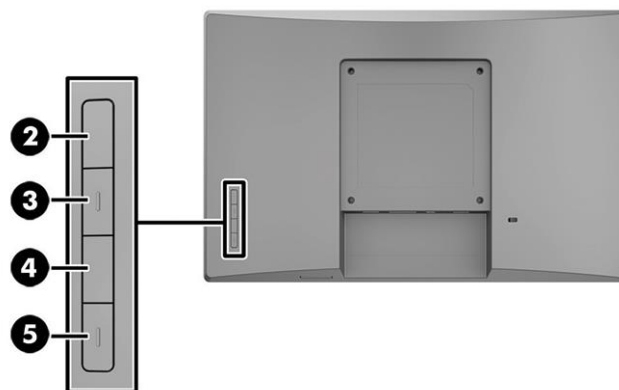
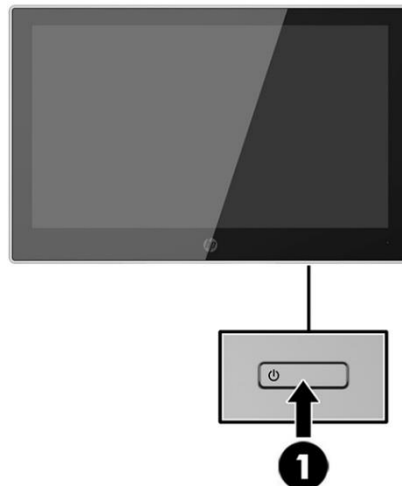


### Overview

#### HP L7014t 14-in Retail Touch Monitor



1. Power button
2. OSD Controls – OK button
3. OSD Controls – Plus “+” button
4. OSD Controls – Minus “-” button
5. Menu button

**Note:** Stand and cables are sold separately; not included. At least one cable kit is required in order to power the monitor. Configuration options are shown on pages 8-10 of this document.

### Overview

#### Models

HP L7014t 14-in Retail Touch Monitor

T6N32AA

---

#### Introduction

Complete your retail solution with the HP L7014t Touch Monitor, an eye-catching, edge-to-edge widescreen display that gives customers and associates easily readable transaction data. Interactive touch allows customers to enter loyalty information and associates to work with touch-enabled apps.

---

#### Key Benefits

- Wide aspect for a wide range of apps - 14-inch diagonal, 16:9 aspect ratio, high-resolution display
  - Easy interactivity with Integrated projective capacitive touch technology that supports 10-point and Beep-on-touch
  - Durability for high-traffic areas with a VESA mount<sup>1</sup> that enables use as a customer-facing display or as a standalone display on a stand or wall.
- 

#### Compatibility

The HP L7014t 14-in Retail Touch Monitor is recommended to work with HP RP9, HP RP5, HP RP5800 systems, HP Desktop Mini, and HP Desktops.

**NOTE:** Not all HP Retail system models are available in all regions.

---

#### Service and Support

Your HP Peripheral Limited Warranty is a three (3) year advanced exchange parts replacement warranty.

---

### Technical Specifications

<b>General</b>	<b>Display Size (diagonal)</b>	14 inch
	<b>Display Type</b>	TN w/LED backlight
	<b>Native Resolution</b>	1366x768@60Hz
	<b>Aspect Ratio</b>	16:9
	<b>Brightness</b>	200 nits (with glass)
	<b>Static Contrast Ratio - Typical</b>	350:1 static
	<b>Dynamic Contrast Ratio (DCR)</b>	N/A
	<b>Pixel Pitch</b>	0.2265(H) mm x 0.2265(V) mm
	<b>Pixels Per Inch (PPI)</b>	112
	<b>Backlight Lamp Life</b>	15,000 hrs (Min.)
	<b>Anti-Glare Panel</b>	Yes
	<b>BrightView Panel</b>	No
	<b>Response Time</b>	16 ms on/off (typ.)
	<b>Color Gamut</b>	45%
	<b>Color Support</b>	14.4M colors
	<b>Horizontal Viewing Angle (typical CR&gt;10)</b>	90 degrees
	<b>Vertical Viewing Angle (typical CR&gt;10)</b>	60 degrees
	<b>3D Vertical Viewing Angle</b>	N/A
	<b>Panel Active Area</b>	309.4mm x 173.95mm
	<b>Preset Graphic Modes/Supported Resolutions</b>	1366x768@ 60 Hz 1280 x 1024@ 60Hz 1280 X 800 @ 60 Hz 1280 X 720 @ 60 Hz 1024 X 768 @ 60 Hz 800 X 600 @ 60 Hz 720 X 400 @ 70 Hz 640 X 480 @ 60 Hz "
	<b>Maximum Resolution</b>	1366x768@60Hz
	<b>Recommended Resolution</b>	1366x768@60Hz
	<b>Vertical Scan Range</b>	50 to 76 Hz
	<b>Horizontal Scan Range</b>	24 to 80 kHz
	<b>Default Color Temperature</b>	6500K
	<b>Maximum Pixel Clock Speed</b>	110 MHz
	<b>Exterior Color of Monitor Bezel and Stand</b>	HP logo(front): PMS Cool Gray 10c Rear cover: Asteroid Front cover: HP Black
	<b>Plug &amp; Play</b>	Yes
	<b>Tilt</b>	-5 to +135 degrees
	<b>Swivel</b>	N/A
	<b>Pivot</b>	N/A

### Technical Specifications

	<b>Security Lock Ready</b>	N/A
	<b>Height Adjustment</b>	N/A
	<b>Height Adjustment Range (Min-Max)</b>	N/A
	<b>Detachable Base</b>	Yes
	<b>Webcam</b>	N/A
	<b>Speakers Output Power</b>	N/A
	<b>Warranty</b>	3 years
	<b>VESA Mounting</b>	Yes
<b>Touch Specifications</b>	<b>Touch Panel Type</b>	Projected Capacitive Touch, > 10 points
	<b>Positional Accuracy</b>	±1.0 mm for all areas of touchable active area
	<b>Resolution Accuracy</b>	4096 x 4096
	<b>Optical Light Transmission (per ASTM D1003)</b>	Normal Glass: ≥85%
	<b>Electrostatic Projection (per EN6100-4-2, 1955)</b>	Air +/- 8kv, contact +/-4k
<b>On Screen Display (OSD)</b>	<b>On Screen Display User Controls</b>	Brightness, Contrast, Input Control, Color, Image Control, Power Control, Menu Control, Management, Language, Information, Factory Reset, Exit
	<b>User Programmable Modes</b>	Yes, 8
	<b>Monitor Control Buttons or Switches</b>	Brightness, Color Control, Information, Menu
	<b>Audio Controls</b>	N/A
	<b>Languages</b>	10 (German, Simplified Chinese, Traditional Chinese, Japanese, English, Spanish, French, Italian, Netherlands, Brazilian Portuguese)
<b>Input Connectors</b>	(1) DisplayPort 1.2, HDCP Support	
<b>Power</b>	<b>Power Supply</b>	External Power Supply
	<b>Power Source</b>	100-240VAC 50/60Hz
	<b>Power Consumption - Maximum</b>	9.5W
	<b>Energy Saving/Standby Mode</b>	<0.5W
	<b>Power Consumption - Typical</b>	7.17W
	<b>Power Cable Length</b>	1.83m
	<b>Operational Mode at 100 VAC</b>	23.5KWh
	<b>Operational Mode at 115 VAC</b>	23.5KWh
	<b>Operational Mode at 230 VAC</b>	23.5KWh

### Technical Specifications

<b>Operating Conditions</b>	<b>Operating Temperature</b>	41° to 95° F (5 to 35° C) at 20% to 80% humidity (non-condensing at ambient)
	<b>Non-operating Temperature</b>	-4° to 140° F (-20° to 60° C) at 5% to 95% humidity (non-condensing at ambient)
	<b>Operating Humidity</b>	20% - 80% (non-condensing)
	<b>Non-operating Humidity</b>	5% - 95%
	<b>Operating Altitude</b>	0 to 5000m (16,400 feet)
	<b>Non-operating Altitude</b>	0 to 12,192m (40,000 feet)
<b>Dimensions</b>	<b>Unpacked without stand</b>	339.8mm x 41.5mm x 218.0mm 13.4 in x 1.7 in x 8.6 in
	<b>Packed</b>	410mm x 140mm x 286mm (inner) 442mm x 426mm x 316mm (outer) 16.14 in x 5.51 in x 11.26 in (inner) 17.40 in x 16.77 in x 12.44 in (outer)"
	<b>Display Head Dimensions (Unpacked without stand)</b>	339.8mm x 41.5mm x 218.0mm 13.4 in x 1.7 in x 8.6 in
	<b>Weight (unpacked with stand)</b>	1.70kg 3.76lbs
	<b>Weight (packed)</b>	2.81kg 6.19lb
	<b>Weight (head only)</b>	
	<b>Software</b>	HP Display Assistant
<b>What's in the box?</b>	HP Retail Display, Setup poster, and Documentation CD. Cable kit must be ordered separately. A minimum of one cable kit is required to connect the monitor to a host PC. See the configuration options and options and accessories sections of this document for available options.	
<b>Country of Origin</b>	China	

### Environmental

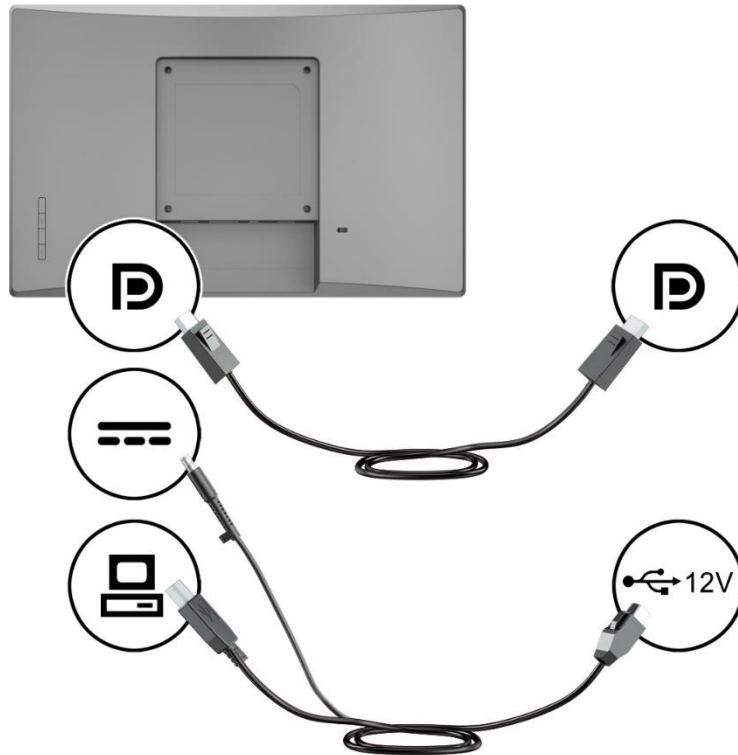
#### Environmental




<b>Mercury-free display backlighting</b>	Yes, Mercury-free backlights
<b>Arsenic-Free Display Glass</b>	Yes
<b>Low Halogen</b>	Yes <b>NOTE:</b> External power supplies, power cords, cables and peripherals are not Low Halogen. Service parts obtained after purchase may not be Low Halogen.
<b>Agency Approvals and Certifications</b>	CB, CE, FCC marking, ErP, CSA/C-UL/C-ETL Mark, cTUVus/UL/CSA-NTRL/ETL-NRTL Mark, ICES, Japan VCCI, CCC, CECP, China CEL, Taiwan BSMI, Bauart; KCC; e-standby; PSB, ISC mark, C-tick, ETC, Vietnam MEPS, Australian-New Zealand MEPS/EPA7.0
<b>Microsoft WHQL Certification</b>	Win-10, Win-8, Win-7
<b>ENERGY STAR® Qualified</b>	Yes, E57
<b>EPEAT® Registered</b>	Gold <b>NOTE:</b> EPEAT® registered where applicable. EPEAT registration varies by country. See <a href="http://www.epeat.net/">http://www.epeat.net/</a> for registration status by country.
<b>China Energy Label</b>	Grade1 (GB21520-2008)
<b>TCO Certified Edge</b>	N/A
<b>TCO Certified</b>	N/A
<b>SmartWay Transport Partnership</b>	Yes (NA SKU)
<b>Contains Recycled Plastics in Back Cover</b>	Yes
<b>Contains Recycled Plastics in Base/Stand</b>	Yes
<b>Contains Recycled Plastics in Other Parts</b>	Yes
<b>Recyclable Plastics</b>	N/A
<b>Recyclable Packaging</b>	N/A

### Configurations

#### Configuration Options

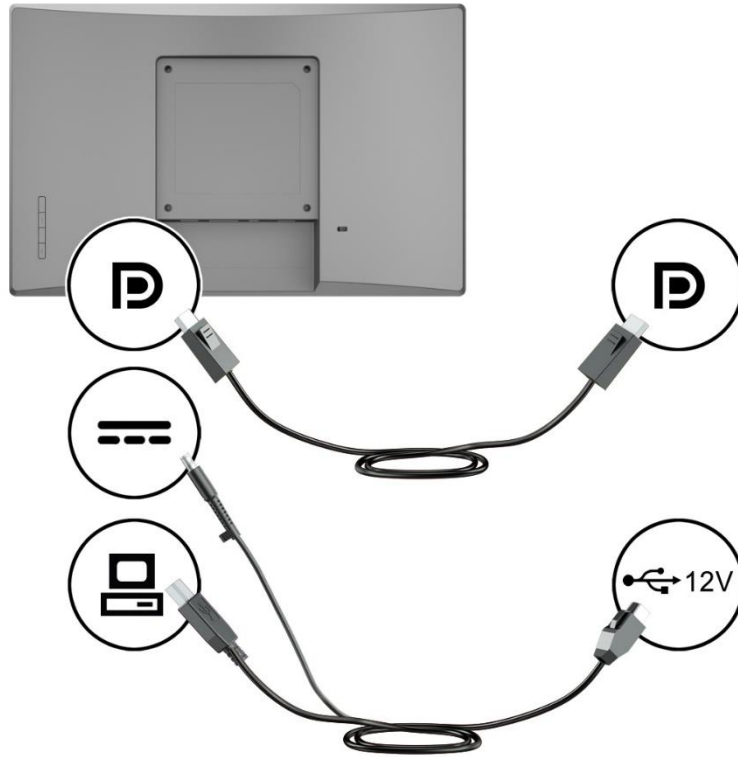
1) HP 14-in Retail Touch Monitor mounted to an HP Retail System as CFD.



HP Arm Mounting Bracket	700mm DisplayPort Cable	700mm USB/Power "Y" Cable
		

### Configurations

2) HP 14-in Retail Touch Monitor connected to an HP RP5 Retail System with a 12 V powered USB port.

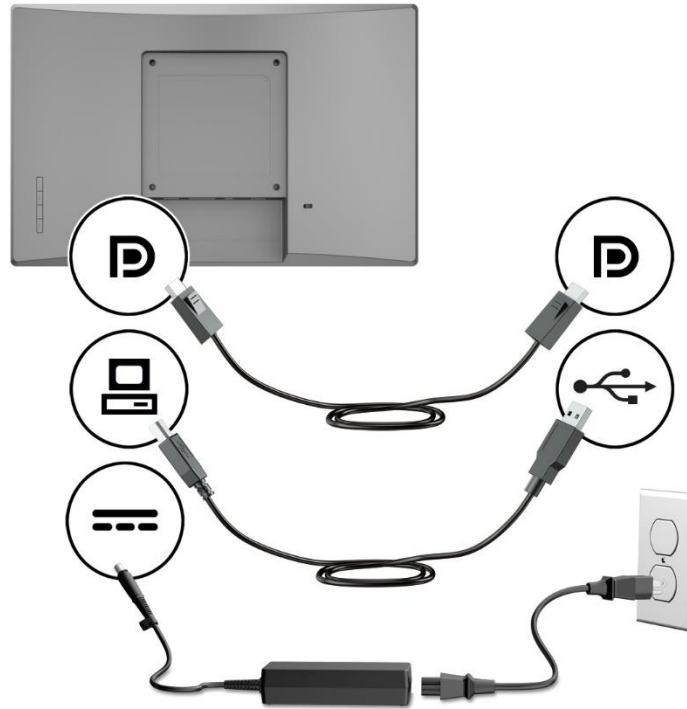


HP Compact Stand (T6N33AA)		
	300cm DisplayPort Cable	300cm USB/ Power "Y" Cable



### Configuration

#### 3) HP 14-in Retail Touch Monitor connected to an HP Retail System without a 12 V powered USB port.



HP Compact Stand (T6N33AA)	300cm DisplayPort Cable	300 cm USB B-A cable	HP 45 W Power Adapter

### Options and Accessories

#### Options and Accessories

Category	Description	Part Number
<b>Stands</b>	HP Monitor Stand for L7010t, L7014, L7014t	T6N33AA
<b>Cables</b>	HP 700mm Cable Kit for CFD on RP9	V7563AA
	HP 300cm DP and USB Power Cable for L7014	V4P95AA
	HP 300cm DP Cable for L7014	V4P97AA
<b>Adapters</b>	HP 45w Smart AC Adapter	H6Y88AA

---

### Summary of Changes

Date of change:	Version History:		Description of change:
	From v1 to v2		

© Copyright 2016 HP Development Company, L.P. The information contained herein is subject to change without notice. The only warranties for HP products and services are set forth in the express warranty statements accompanying such products and services. Nothing herein should be construed as constituting an additional warranty. HP shall not be liable for technical or editorial errors or omissions contained herein.